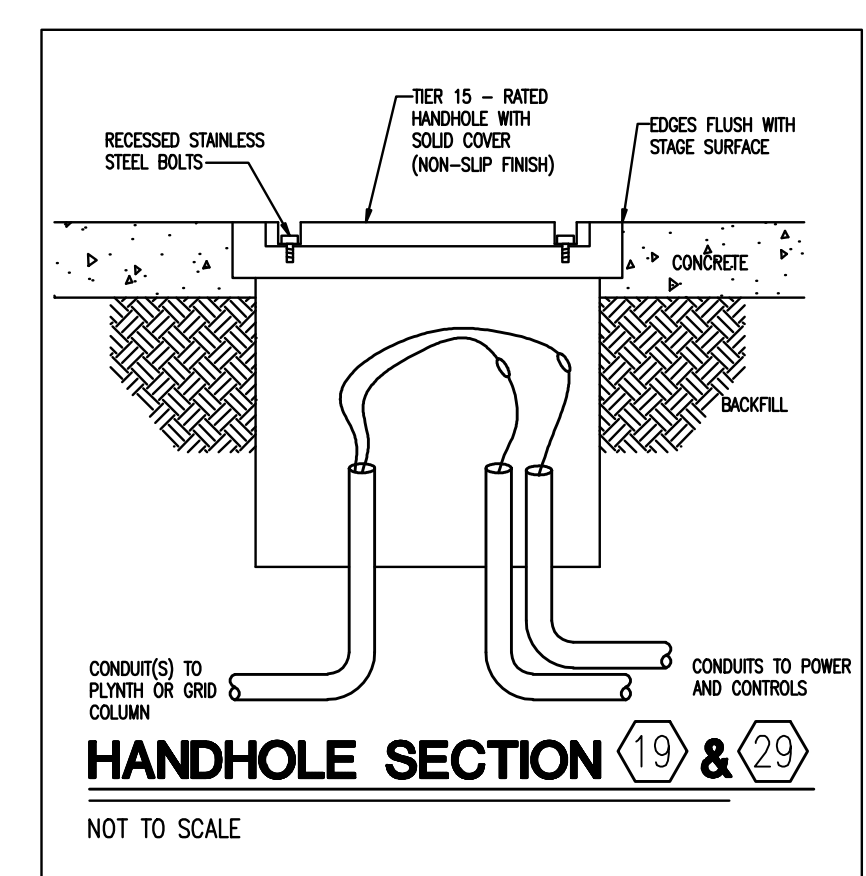
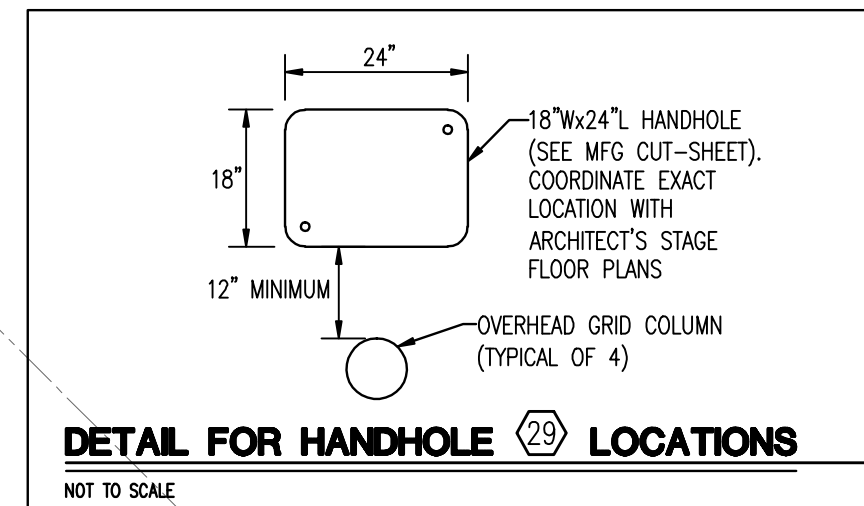
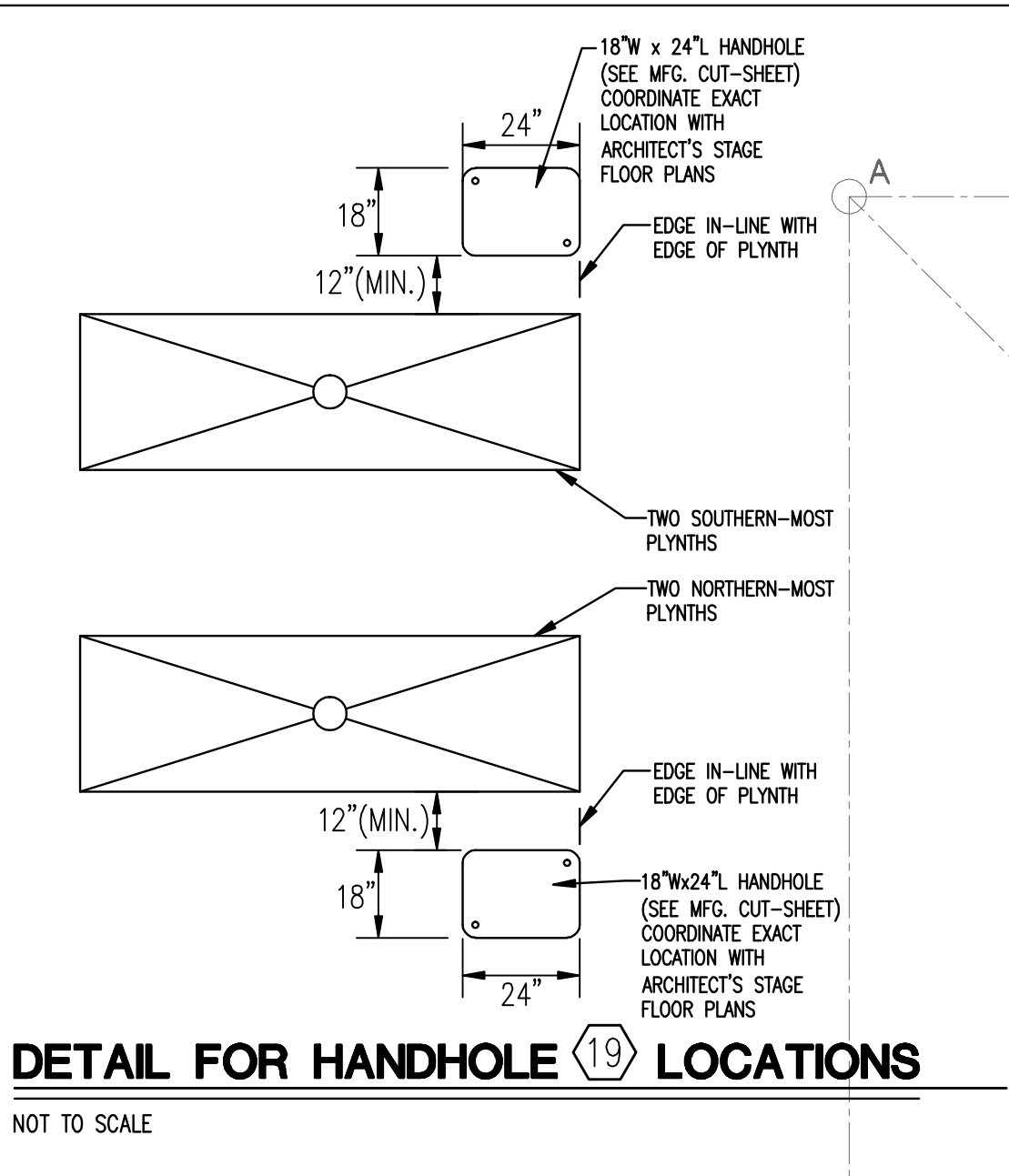
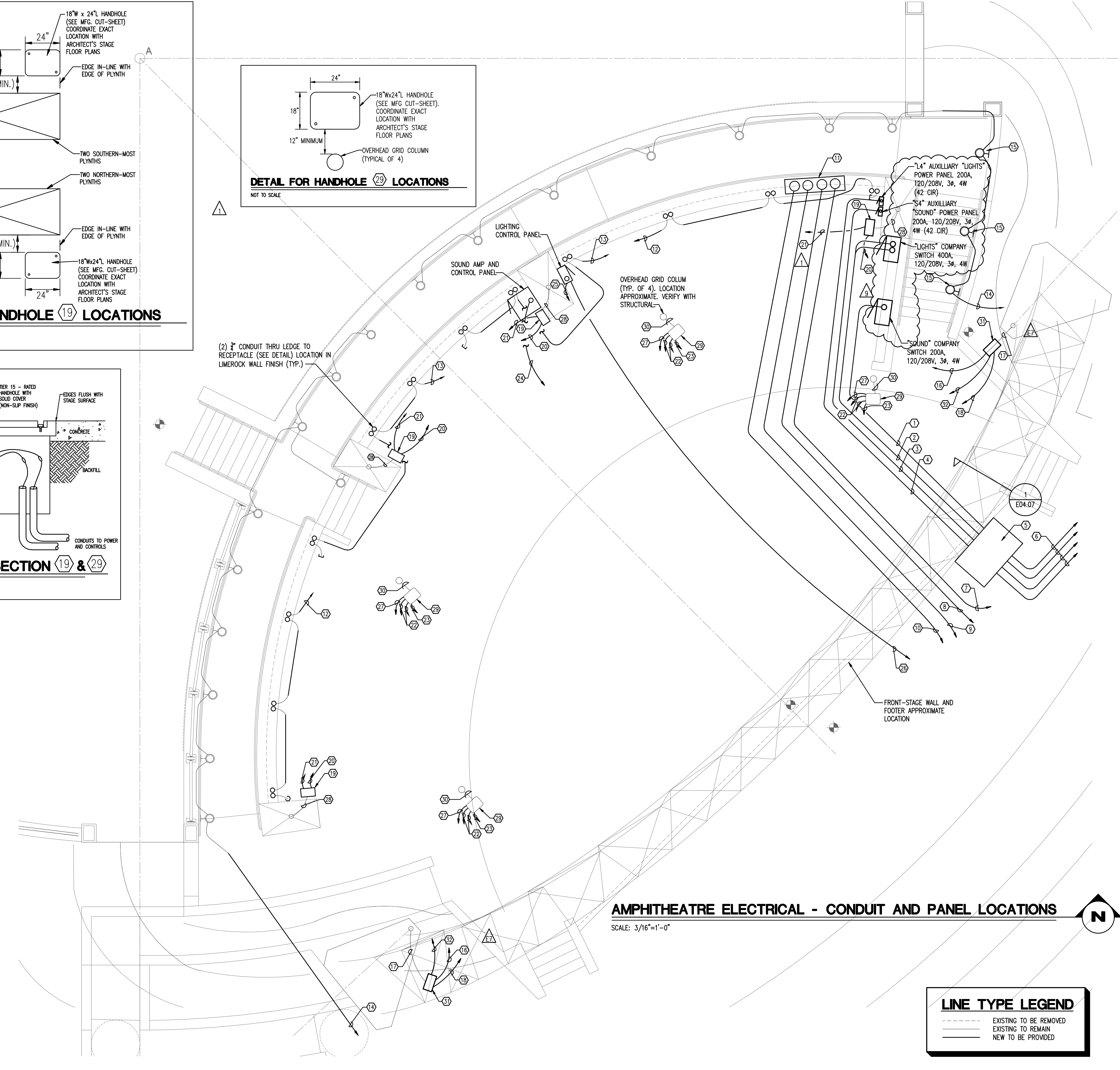


WORK NOTES:

- 1) 2" C-3 #4/0 A, 1 #4/0 N & 1 #3 G FROM TRANSFORMER/ENCLOSED BREAKER IN PDS 5-1 TO 200A "SOUND" COMPANY SWITCH. (CONDUIT SHALL TURN-UP UNDER NORTH END OF PANEL).
- 2) 3" C-3 #4/0 A, 1 #4/0 N & 1 #3 G EACH FROM TRANSFORMER/ENCLOSED BREAKER IN PDS 5-1 TO 400A "LIGHTS" COMPANY SWITCH. (CONDUIT SHALL TURN-UP UNDER NORTH END OF PANEL).
- 1) 2" C-3 #4/0 A, 1 #4/0 N & 1 #6 G FROM NEW PDS 5-1 TO 200A AUXILIARY "SOUND" POWER PANEL "S4".
- 1) 2" C-3 #4/0 A, 1 #4/0 N & 1 #6 G FROM NEW PDS 5-1 TO 200A AUXILIARY "LIGHTS" POWER PANEL "L4".
- PROVIDE A 48"Wx72"Lx36"D TRAFFIC RATED HAND-HOLE AT AUDIENCE GRADE SOUTH OF STAGE.
- EXTEND CONDUIT & CONDUCTORS TO NEW PDS #5-1. REFER TO SITE PLAN RISER DIAGRAM AND PDS 5-1 DETAIL.
- SOUND AND LIGHT CONTROL CHASE. EXTEND (1) 12" PVC CONDUIT FROM STAGE LEFT GROUPING AREA TO CONTROL PLATFORM #3. REFER TO SITE PLAN. HEAT AND SHAPE CONDUIT TO BEND WHERE POSSIBLE TO REDUCE PRE-FORMED BENDS. PROVIDE PULL-STRING.
- SOUND AND LIGHT CONTROL CHASE. EXTEND (1) 12" PVC CONDUIT FROM STAGE LEFT GROUPING AREA TO NORTHEAST SIDE OF CONTROL PLATFORM #1. HEAT AND SHAPE CONDUIT TO BEND WHERE POSSIBLE TO REDUCE PRE-FORMED BENDS. PROVIDE PULL-STRING.
- SOUND AND LIGHT CONTROL CHASE. EXTEND (1) 12" PVC CONDUIT FROM STAGE LEFT GROUPING AREA TO SOUTHWEST SIDE OF CONTROL PLATFORM #1. HEAT AND SHAPE CONDUIT TO BEND WHERE POSSIBLE TO REDUCE PRE-FORMED BENDS. PROVIDE PULL-STRING.
- SOUND AND LIGHT CONTROL CHASE. EXTEND (1) 12" PVC CONDUIT FROM STAGE LEFT GROUPING AREA TO CONTROL PLATFORM #2. REFER TO SITE PLAN. HEAT AND SHAPE CONDUIT TO BEND WHERE POSSIBLE TO REDUCE PRE-FORMED BENDS. PROVIDE PULL-STRING.
- SOUND AND LIGHT CONTROL CHASE CONDUITS SHALL TURN UP THROUGH STAGE FLOOR AT STAGE LEFT IN A RECESSED GROUP. PROVIDE RECESSED BOX AND COVER PER ARCHITECT'S DETAIL DRAWING.
- PROVIDE (1) 2" C-1 #10 A, 1 #10 N & 1 #10 G FOR RECEPTACLE CIRCUIT TO AUXILIARY "SOUND" POWER PANEL.
- PROVIDE (1) 2" C-1 #10 A, 1 #10 N & 1 #10 G FOR RECEPTACLE CIRCUIT TO AUXILIARY "LIGHTS" POWER PANEL.
- EXTEND CIRCUIT THRU LIGHTING CONTACTOR TO PANEL 5B IN PDS #5 AS ORIGINALLY DESIGNED (REFER TO E04.02).
- EXTEND 2" C INSIDE WALL AND PROVIDE "H" FIXTURES ALONG STAIRS. THESE LIGHTS WERE REMOVED FROM ORIGINAL DESIGN WHEN STAIRS WERE RELOCATED. REFER TO E04.02.
- PROVIDE (1) 1 1/2" C FROM ARCH FOUNDATION TO AUXILIARY "LIGHTS" POWER PANEL. PROVIDE PULL STRING FOR POWER CIRCUITS.
- EXISTING 1 1/2" C IN ARCH FOUNDATION.
- PROVIDE (1) 1 1/2" C TO LIGHTING CONTROL PANEL. PROVIDE PULL STRING FOR DMX CABLES.
- PROVIDE A 18"Wx24"Lx18"D TRAFFIC RATED HANDHOLE IN STAGE FLOOR AT BASE OF TENT-STRUCTURE FOUNDATION. ROUTE EXISTING 1 1/2" C FROM FOUNDATION TO HANDHOLE LOCATION INDICATED. HANDHOLE BOX EQUAL TO QUAZITE #B14162218A. HANDHOLE COVER EQUAL TO QUAZITE #C12162202A. REFER TO MANUFACTURER'S DRAWINGS. COORDINATE EXACT LOCATION OF HANDHOLE WITH ARCHITECT'S STAGE FLOOR PLANS.
- PROVIDE (1) 2" C-1 #10 A, 1 #10 N & 1 #10 G FROM HANDHOLE TO AUXILIARY "LIGHTS" POWER PANEL.
- PROVIDE (1) 1" C TO LIGHTING CONTROL PANEL. PROVIDE PULL STRING FOR DMX CABLE.
- PROVIDE (2) 2" C-1 #10 A, 1 #10 N & 1 #10 G EACH FROM BASE OF GRID STRUCTURE TO AUXILIARY "LIGHTS" POWER PANEL.
- PROVIDE (1) 1" C TO LIGHTING CONTROL PANEL. PROVIDE PULL STRING FOR DMX CABLE.
- PROVIDE (1) 1" C-3 #10 A, 3 #10 N & 1 #10 G TO AUXILIARY "SOUND" POWER PANEL. FOR POWER CIRCUITS TO SOUND AMP CONTROL PANEL.
- PROVIDE (2) 2" C-1 #10 A, 1 #10 N & 1 #10 G EACH TO AUXILIARY "LIGHTS" POWER PANEL. FOR POWER TO LIGHTING CONTROL PANEL.
- PROVIDE (1) 3" C FROM LIGHTING CONTROL PANEL TO CONTROL PLATFORM #1 WITH (1) #9729 BELDEN CABLE AND (1) PULL-STRING.
- PROVIDE (1) 1" C FROM HANDHOLE TO SOUND AMP CONTROL PANEL. PROVIDE PULL STRING FOR PUBLIC ADDRESS SPEAKER/SOUND SYSTEM CABLES.
- EXTEND AND ROUTE EXISTING 1 1/2" C FROM COLUMN FOUNDATION TO HANDHOLE AS INDICATED.
- PROVIDE A 18"Wx24"Lx18"D TRAFFIC-RATED HANDHOLE IN STAGE FLOOR NEAR BASE OF OVERHEAD GRID COLUMN. HANDHOLE BOX EQUAL TO QUAZITE #B14162218A. HANDHOLE COVER EQUAL TO QUAZITE #C12162202A. COORDINATE EXACT LOCATION WITH ARCHITECT'S STAGE FLOOR PLANS.
- EXTEND AND ROUTE (2) 2" C FROM COLUMN FOUNDATION TO HANDHOLE AS INDICATED.
- PROVIDE A 18"Wx24"Lx18"D TRAFFIC RATED HANDHOLE AT AUDIENCE GRADE AT BASE OF ARCH STRUCTURE FOUNDATION. ROUTE EXISTING 1 1/2" C FROM FOUNDATION TO HANDHOLE LOCATION INDICATED. HANDHOLE BOX EQUAL TO QUAZITE #B14162218A. HANDHOLE COVER EQUAL TO QUAZITE #C12162202A. REFER TO MANUFACTURER'S DRAWINGS.
- PROVIDE (1) 1" C FROM HANDHOLE TO SOUND AMP CONTROL PANEL. PROVIDE PULL-STRING FOR PUBLIC ADDRESS/SOUND SYSTEM CABLES.



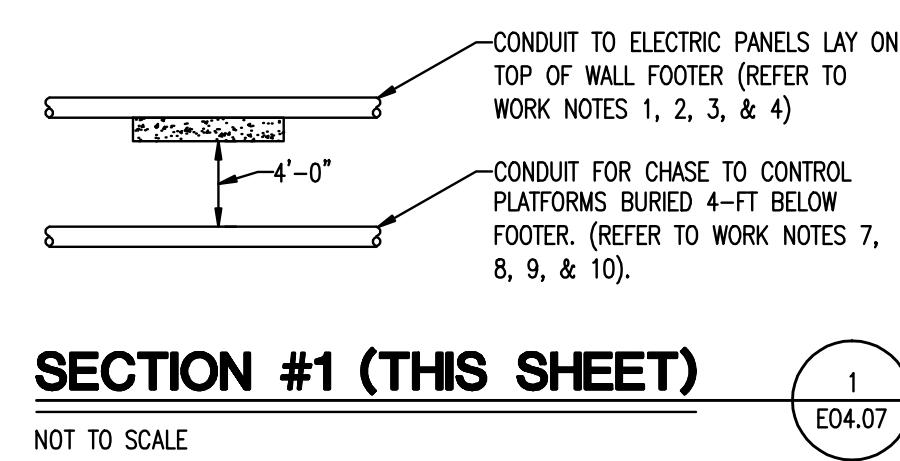
(2) 2" CONDUIT THRU LEDGE TO RECEPTACLE (SEE DETAIL) LOCATION IN LIMEROCK WALL FINISH (TYP.)



AMPHITHEATRE ELECTRICAL - CONDUIT AND PANEL LOCATIONS
SCALE: 3/16"=1'-0"

LINE TYPE LEGEND

---	EXISTING TO BE REMOVED
---	EXISTING TO REMAIN
---	NEW TO BE PROVIDED



NO.	DATE	DESCRIPTION	REVISIONS
1	5/14/13	DETAILS ADDED	
2	5/14/13	REV A7	
3	7-13-12	REV A8	
4	7-13-12	REV A9	

PROJECT NUMBER: **BP20-006**
DATE: **6/25/12**
CHECKED BY: **NH**
SCALE: **1-1**
DRAWN BY: **NH**

26-123

THE KOGER CENTER
1311 EXECUTIVE CENTER DRIVE
TALLAHASSEE, FLORIDA 32301
(850) 701-2740 (850) 701-2700 FAX

PREPARED FOR:

PINNACLE ENGINEERING GROUP, P.A.
3000 THUNDERBOLT ROAD, SUITE 102
TALLAHASSEE, FLORIDA 32308
(850) 422-7188 PHONE
(850) 422-5565 FAX
PUNNINGTON, FLORIDA, INC. 9703

BLUEPRINT
CONSTRUCTION PLANS

SHEET TITLE: **AMPHITHEATRE ELECTRICAL CONDUIT AND PANEL LOCATIONS**

SHEET NUMBER: **E04.07**

PROJECT NAME: **CAPITAL CASCADE TRAIL CONSTRUCTION PLANS**